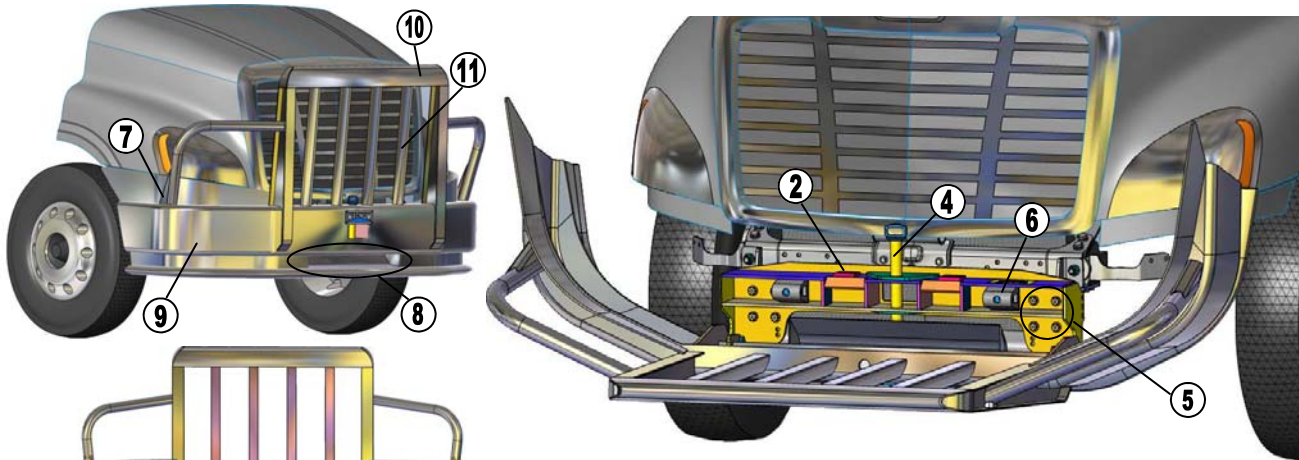
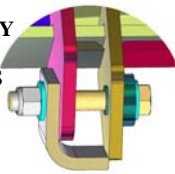


Magnum Bumper Features Guide



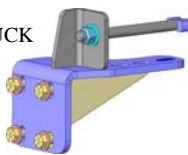
1 **QUAD HINGE BUSHING TECHNOLOGY**
WITH FOUR HARDENED STEEL
BUSHINGS FOR SMOOTH CONTINUOUS
OPERATION THROUGHOUT THE LIFE
OF THE BUMPER



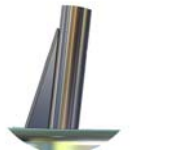
3 **LATCH MOUNTINGS**
FEATURES FOUR HARDENED STEEL
BUSHINGS THAT PROVIDE SUPERIOR
STRENGTH AND LONGEVITY FOR
SMOOTH AND EASY LATCH
OPERATION



5 **CUSTOM MOUNTING HARDWARE**
ENGINEERED FOR EACH UNIQUE TRUCK
APPLICATION TO INSURE SUPERIOR
STRENGTH FOR PULLING AND TRUE
EASY BOLT ON INSTALLATION



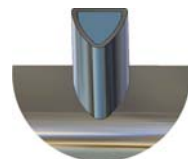
7 **HEADLIGHT HOOP BUTTRESS**
PROVIDES ADDITIONAL SUPPORT
FOR HEADLIGHT PROTECTING HOOPS



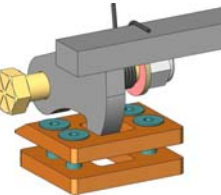
9 **1 PC. MAIN BUMPER BEAM**
ENGINEERED AND FORMED TO
COMPLEMENT THE UNIQUE
STYLING OF THE TRUCK



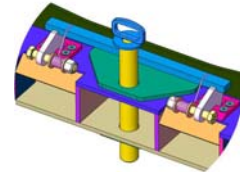
11 **CUSTOM GRILL BAR EXTRUSION**
INNOVATIVE BULLET SHAPED
EXTRUSION PROVIDES UNMATCHED
STRENGTH AND STYLE



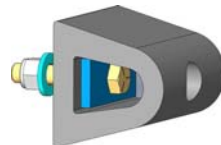
2 **DOUBLE HOOK QUICK LATCH BAR**
DUAL SPRING INTERLOCKING
DESIGN KEEPS THE BUMPER SAFELY
CLOSED WITH ADJUSTABLE LATCH
PLATES FOR EASY MAINTENANCE
AND RELIABILITY



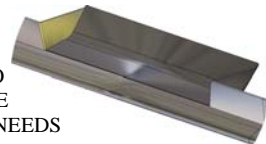
4 **TOW PIN**
HIGH STRENGTH 1-1/2" DIAMETER
TOW PIN PULLS SECURELY FROM
THE REINFORCED STEELWORK
WITH DOUBLER PLATES FOR
HEAVY DUTY PULLS



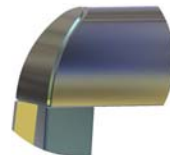
6 **RUBBER BUMPERS**
REPLACEABLE RUBBER BUMPERS
PREVENT RATTLING FOR QUIET
OPERATION



8 **FUNCTIONING AIR SCOOP**
WITH A RAM AIR LIKE ACTION TO
DIRECT AIR FLOW TO THE ENGINE
TO MAINTAIN PROPER COOLING NEEDS



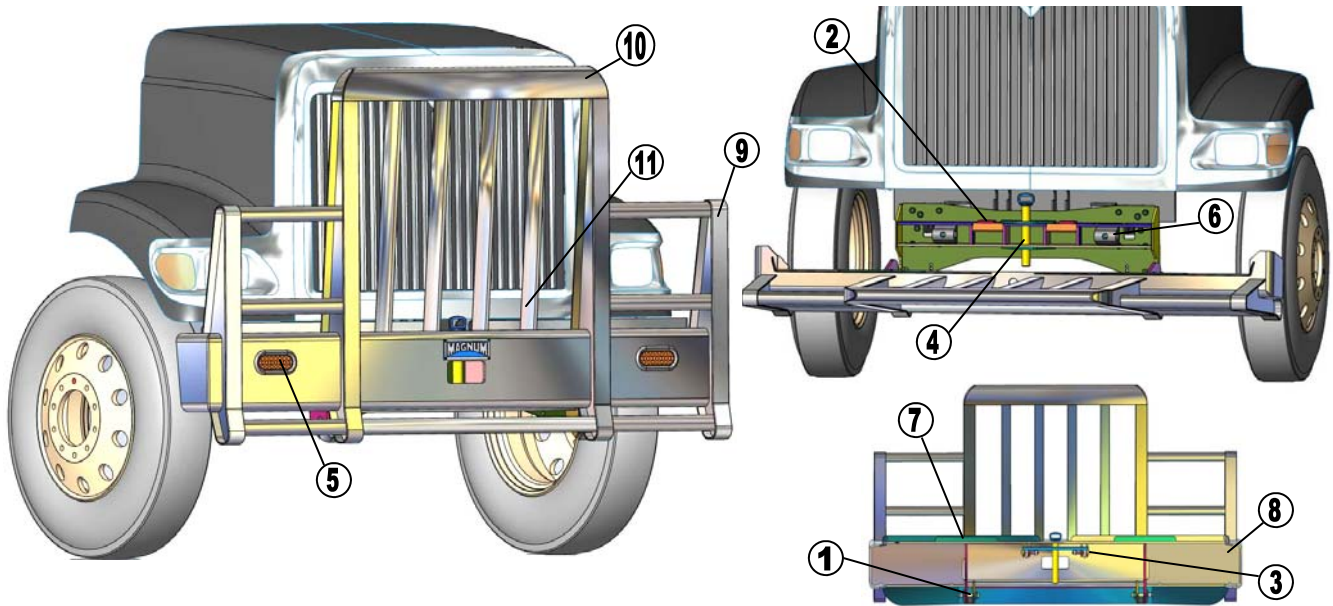
10 **CUSTOM HEADER EXTRUSION**
ADDS STRENGTH WITH DISTINCTIVE
VISUAL APPEAL FOR THAT
CUSTOM LOOK



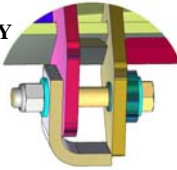
12 **HIGH POLISH FINISH**
COMES FROM MULTIPLE STEP
PROCESS THAT GIVES ALL
BUMPERS A MIRROR LIKE FINISH



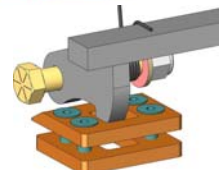
Magnum Bumper Features Guide



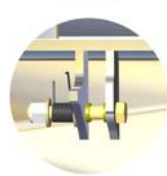
1 **QUAD HINGE BUSHING TECHNOLOGY**
WITH FOUR HARDENED STEEL
BUSHINGS FOR SMOOTH CONTINUOUS
OPERATION THROUGHOUT THE LIFE
OF THE BUMPER



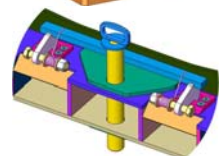
2 **DOUBLE HOOK QUICK LATCH BAR**
DUAL SPRING INTERLOCKING
DESIGN KEEPS THE BUMPER SAFELY
CLOSED WITH ADJUSTABLE LATCH
PLATES FOR EASY MAINTENANCE
AND RELIABILITY



3 **LATCH MOUNTINGS**
FEATURES FOUR HARDENED STEEL
BUSHINGS THAT PROVIDE SUPERIOR
STRENGTH AND LONGEVITY FOR
SMOOTH AND EASY LATCH
OPERATION



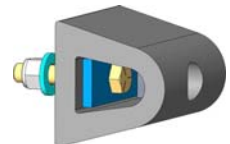
4 **TOW PIN**
HIGH STRENGTH 1-1/2" DIAMETER
TOW PIN SEATED SECURELY IN THE
REINFORCED STEELWORK WITH
DOUBLER PLATES FOR HEAVY DUTY
TOWING



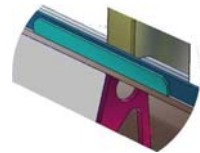
5 **LED SIGNAL LIGHTS**
FOR EXTRA VISIBILITY THE 4 POST
COME WITH A HIGH DIODE COUNT
AMBER LED TURN SIGNAL LAMP



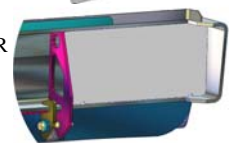
6 **RUBBER BUMPERS**
REPLACEABLE BUMPERS PREVENT
RATTLING FOR QUIET OPERATION



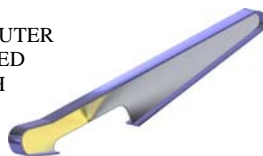
7 **STIFFENERS**
1/4" THICK TRIM ALONG
WITH 1/4" STIFFENERS ADD EXTRA
STRENGTH TO THE MAIN BEAM



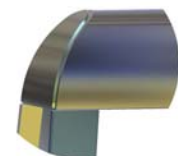
8 **BOXED MAIN BEAM**
MAIN BEAM IS BOXED FOR SUPERIOR
RIGIDITY AND IMPACT PROTECTION



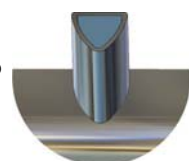
9 **VERTICAL BEAM**
THE ROBUST AND STURDY OUTER
VERTICAL BEAM GIVES ADDED
PROTECTION AND STRENGTH
IN CONJUNCTION WITH OUR
BOXED MAIN BEAM



10 **CUSTOM HEADER EXTRUSION**
ADDS STRENGTH WITH DISTINCTIVE
VISUAL OEM APPEAL FOR THAT
CUSTOM LOOK



11 **CUSTOM GRILL BAR EXTRUSION**
INNOVATIVE BULLET SHAPED
EXTRUSION PROVIDE UNMATCHED
STRENGTH AND STYLE



12 **HIGH POLISH FINISH**
COMES FROM MULTIPLE STEP
PROCESS THAT GIVES ALL
BUMPERS A MIRROR LIKE FINISH

